

Occurrence of *Plateumaris weisei* (DUVIVIER) (Coleoptera, Chrysomelidae, Donaciinae) in South Korea

Masakazu HAYASHI¹⁾ and Hee-Wook CHO²⁾

¹⁾Hoshizaki Green Foundation, Okinoshima, Sono, Izumo, 691–0076 Japan

²⁾Freshwater Bioresources Research Division, Nakdonggang National Institute of Biological Resources, Sangju 37242, South Korea

A transpalaeartic species, *Plateumaris weisei* (DUVIVIER, 1885) is known from northern Europe, Mongolia, northern China, Russia (Yakut, Amur, Primorsky Krai, Sakhalin), and Japan (Hokkaido) (ASKEVOLD, 1991; HAYASHI, 2001). In the eastern Palaeartic Region, the southern limit of its distributional range is 42°N (lowlands in Primorsky Krai and Hokkaido). The last glacial fossils were found from Shiga Prefecture (35°14′.88, 136°16.27′), central Honshu, Japan (HAYASHI & SHIYAKE, 2011). The fossil record indicates that the distribution area shifted southward in the last glacial age.

Recently, we examined several species of Donaciinae collected from South Korea, and two males are identified as *P. weisei*, which is new to the fauna of the Korean Peninsula as recorded below.

2 ♂♂ (Fig. 1), Swamp Yongneup, Mt. Daemsan, Yanggu, Gangwon Prov., South Korea, 30.V.1992, H. C. PARK leg. [H.-W. CHO's private collection, Andong, South Korea]

Plateumaris weisei is characterized by its slender antennal segments, rugulose pronotal disc, rufous appendages, and blunt metafemoral teeth. It is easily distinguished from *P. amurensis* WEISE by the shape of metafemoral teeth (HAYASHI, 2001).

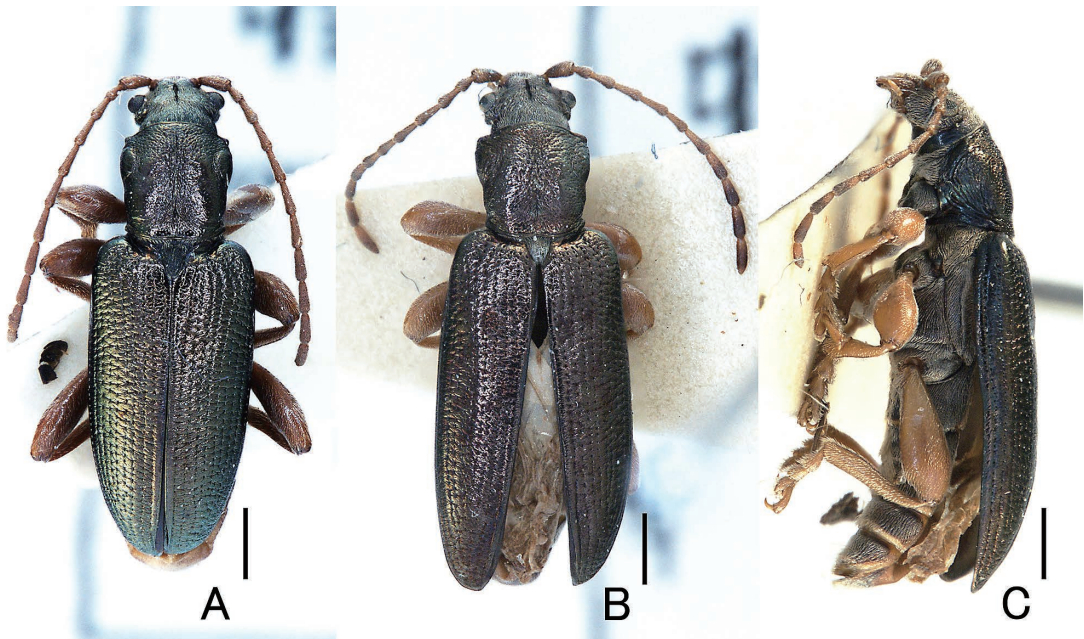


Fig. 1. Males of *Plateumaris weisei* from South Korea. B and C are dorsal and lateral habitus images of the same specimen.

The GPS coordinates of the collecting site is 38°21.57'N; 128°12.41'E and the altitude is ca. 1,180 m. We recognized that it is a relic species of the glacial period in the Korean Peninsula. The discovery of the Korean population of *P. weisei* is important not only for biogeography but also for conservation ecology.

References

- ASKEVOLD, I. S., 1991. Classification, reconstructed phylogeny, and geographic history of the New World members of *Plateumaris* THOMSON, 1859 (Coleoptera: Chrysomelidae: Donaciinae). *Memoirs of the Entomological Society of Canada*, **157**: 5–175.
- HAYASHI, M., 2001. Taxonomic notes on *Plateumaris amurensis* WEISE and *Plateumaris weisei* (DUVIVIER) (Coleoptera: Chrysomelidae: Donaciinae). *Entomological Review of Japan*, **56**: 1–8.
- HAYASHI, M., & S. SHIYAKE, 2011. Past distribution of *Plateumaris weisei* (DUVIVIER) (Coleoptera, Chrysomelidae, Donaciinae) at the Last Glacial Maximum in Shiga Prefecture, West Honshu, Japan. *Elytra, Tokyo*, (n. ser.), **1**: 315–320.

Manuscript received 3 March 2017;
revised and accepted 12 April 2017